

# PM-P003

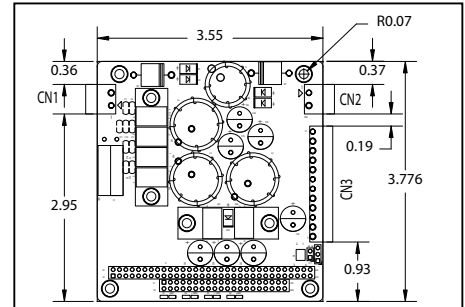
PC/104 65 W DC to DC Converter Module



## Features

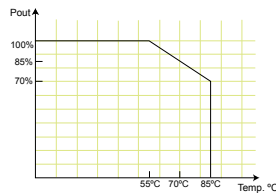
1. High efficiency up to 90%
2. Over voltage protection
3. Over current protection
4. Input power protection
5. Short circuit protection
6. Low quiescent current
7. Low EMI & RFI
8. RoHS compliant
9. Remote on/off
10. Non-isolated type

## Dimensions (Inches)



## Specifications

- Output (max.): 5 V@13 A & 12 V@5 A  
Max. total output: 65 W
- Input: 8 VDC to 36 VDC
- Performance characteristics  
Line regulation: <20 mV\*  
Load regulation: <150 mV  
Efficiency: up to 90%  
Quiescent current: <2 mA\*\*  
\* Measure on 5 V output  
\*\* The LEDs are disabled.
- Remote on/off (jumper select)  
signal PS\_ON control power on/off  
Active high or active low
- Dimensions: 3.775" X 3.55"
- Weight: GW: 445 g; NW: 182 g
- Operating temperature: -40°C ~ 85°C



## PIN Assignments

### Primary Input Power Terminal

CN1	Pin1	Pin2
	GND	VIN1

### Secondary Input (Pass thru.)

CN2	Pin1	Pin2
	GND	VIN2

### Output Power Terminal

CN3	Pin1	Pin2	Pin3	Pin4	Pin5	Pin6
	PW_OK	PS_ON	GND	+12V	+12V	GND
	Pin7	Pin8	Pin9	Pin10	Pin11	Pin12
	GND	+5 V	+5 V	+5 V	+5 V	GND

## Ordering Information

Part No.	Description
PM-P003-R11	65 W DC/DC 8-36 VDC input; 12 V, 5 V output

## Packing information

1 x PM-P003	1 x Manual
-------------	------------

# PM-P004

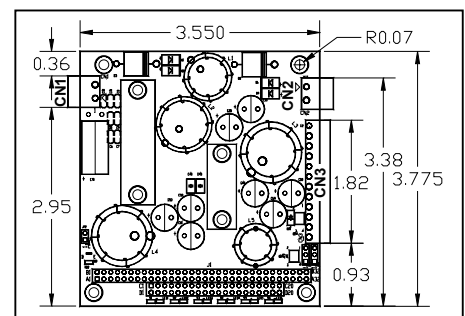
PC/104 40 W DC to DC Converter Module



## Features

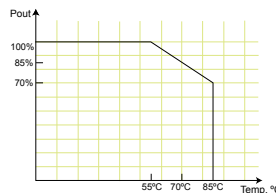
1. High efficiency up to 90%
2. Over voltage protection
3. Over Current Protection
4. Input power protection
5. Short circuit protection
6. Low quiescent current
7. Low EMI & RFI
8. RoHS compliant
9. Remote on/off
10. AT or ATX mode
11. Non-isolated type

## Dimensions (Inches)



## Specifications

- Output (max.): 5 V@8 A, -12 V @0.5 A, 12 V@2.5 A, 3.3 V@7 A & 5 VSB@1 A  
Max. total output: 40 W
- Input: 8 VDC to 36 VDC
- Performance characteristics  
Line regulation: <20 mV\*  
Load regulation: <150 mV  
Efficiency: up to 90%  
Quiescent current: <2 mA\*\*  
\* Measure on 5 V output  
\*\* The LEDs and the 5 VSB are disabled.
- Remote on/off (jumper select)  
signal PS\_ON control power on/off  
Active high or active low
- Dimensions: 3.775" X 3.55"
- Weight: GW: 444 g; NW: 182 g
- Operating temperature: -40°C ~ 85°C



## PIN Assignments

### Primary Input Power Terminal

CN1	Pin1	Pin2
	GND	VIN1

### Secondary Input (Pass thru.)

CN2	Pin1	Pin2
	GND	VIN2

### Output Power Terminal

CN3	Pin1	Pin2	Pin3	Pin4	Pin5	Pin6
	PW_OK	PS_ON	-12V	+12V	+3.3V	+3.3V
	Pin7	Pin8	Pin9	Pin10	Pin11	Pin12
	GND	GND	+5 V	+5 V	5 VSB	GND

## Ordering Information

Part No.	Description
PM-P004-R11	40 W DC/DC 8-36 VDC input; -12 V, 12 V, 5 V, 3.3 V, 5 VSB output

## Packing information

1 x PM-P004	1 x Manual
-------------	------------